

CameraLink Large Area Scan Camera

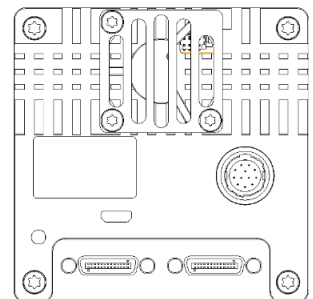
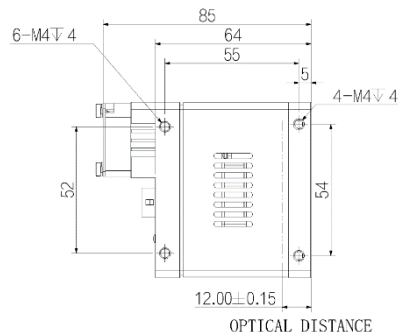
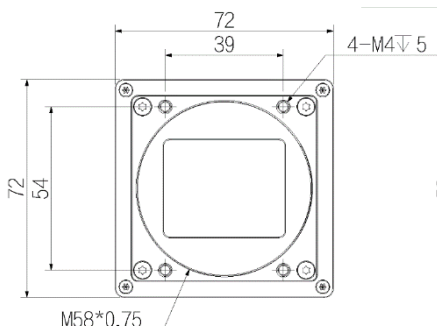
AX7C10MK250E

Product Features

- A patented flatness mediation scheme to eliminate area defocusing;
- Sony CMOS sensor, global shutter, APS-C frame;
- Excellent heat dissipation design, precise temperature control and constant temperature maintenance;
- Support Software Trigger/Hardware Trigger/Free Run Model, support trigger via CameraLink acquisition board;
- Support user-defined ROI, horizontal mirror and vertical mirror;
- Support custom ROI, vertical mirroring;
- Support ISP functions including Auto Exposure/Auto Gain/Gamma Correction/LUT etc.;
- Mono cameras support contrast adjustment;
- Support for FFC function to provide more uniform picture quality;
- Support mutil-frame average function, up to 16 frames averaging;
- Support fan speed adaptive function for setting the target temperature of the sensor;
- Conform to CameraLink protocol and GenICam standard;
- Conform to CE, FCC, KC, RoHS;



Dimensions (mm)



Technical Specifications

Model Name	AX7C10MK250E
Sensor	IMX342
Sensor Type	CMOS
Shutter	Global
Resolution	6240 x 4848
Frame Rate	24.8
Bit Depth	10
Mono/Color	Mono
Pixel Size	3.45 x 3.45
Pixel	31MP
S/N Ratio	40dB
WDR	73dB
Image Format	Mono8\Mono10
ROI	Support
X-axis Flip	Support
Y-axis Flip	Support
Gain	1~32
Gamma	From 0 ~ 4,support LUT
Exposure Time	3 μ S~15S
Sync Mode	Software Trigger/Hardware Trigger/Free Run Mode
SPC	Support
User Setting	Support two sets of user-defined configurations
Cache	512MB data storage
Port	CameraLink
GPIO	3x Opto-isolated input, 3x Opto-isolated output;1x RS232
Lens Mount	M58 x 0.75
Power Supply	DC 24V power supply via 12 Hirose interface
Power Consumption	24V \approx 16.8W
Product Dimensions	72mm*72mm*64mm(not including rear case connector)
Weight	500g
Working Environment	Storage: - 30°C~+80°C; Operation: - 30°C~+50°C

© 2021 IRAYPLE. All rights reserved. Design and specifications are subject to change without notice.
Pictures in the document are for reference only, and the actual product shall prevail.